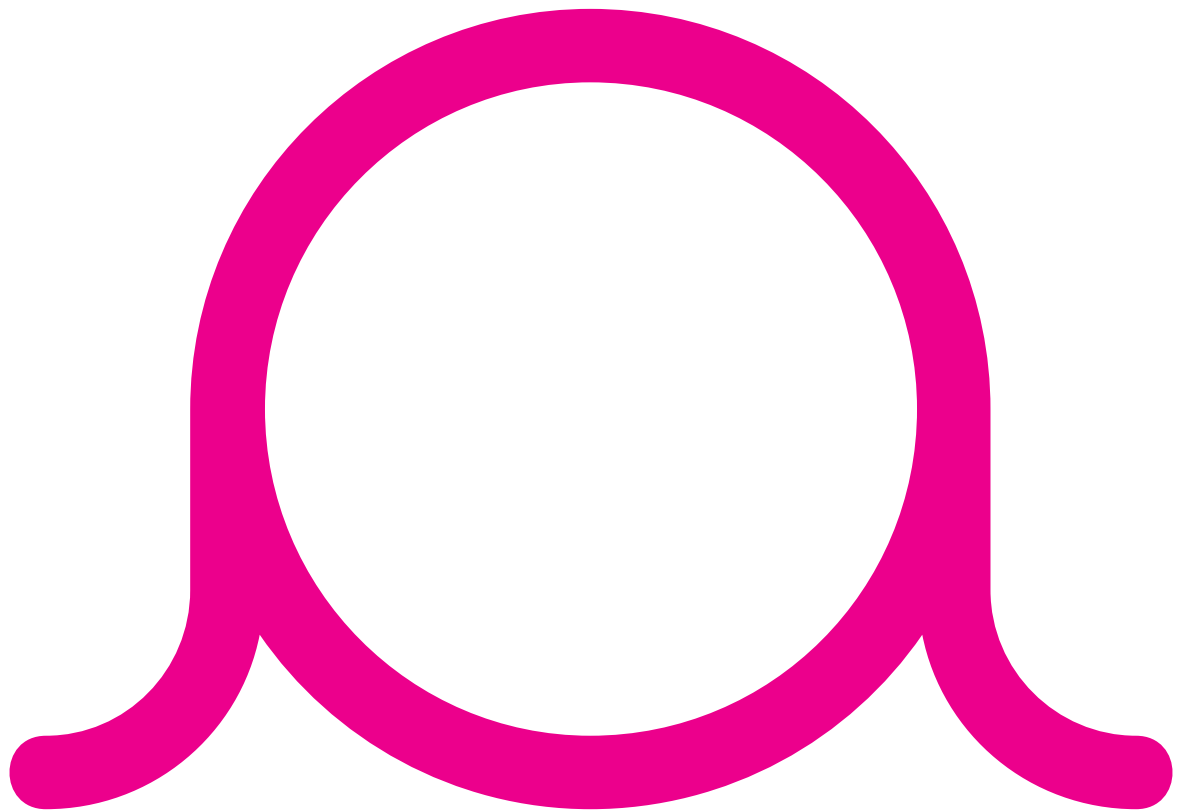




Expletive script is
a modular part based
on a circular form



A recognition of
the alluring power
of swear words

Expletive Script

WEIGHTS

Light

Light Start

Regular

Regular Start

ABOUT

Expletive Script is a modular font based upon a circular form. Its characters can sit above or below the baseline to create unusual display typography and complex repeating patterns. Expletive Script has a playful spirit and simple geometry that makes it suitable for a variety of uses from fine detailing to expressive headlines.

The name Expletive is a recognition of the alluring power of swear words. Typography is the visual representation of language, and profanities themselves have a unique power of expression—they have a palpable quality to insult or seduce. They are also great indicators of social structure; some words lose their offensive nature, others become unspeakable depending on the taboos of the age.

SUPPORTED
LANGUAGES

Afar / Afrikaans / Albanian / Basque / Bosnian / Breton / Catalan / Crimean Tatar (Latin) / Croatian / Czech / Danish / Dutch / English / Esperanto / Estonian / Faroese / Finnish / French / Frisian / Friulian / German / Greenlandic / Hawaiian / Hungarian / Icelandic / Indonesian / Interlingua / Irish Gaelic / Italian / Karelian / Kirundi / Kurdish (Latin) / Ladin / Latvian / Lithuanian / Luxemburgish / Malagasy / Malay / Maltese / Māori Norn / Norwegian (Bokmål) / Norwegian (Nynorsk) / Occitan / Palauan / Polish / Portuguese / Rhaeto-Romance / Romani / Romanian / Sango / Sámi (Northern) / Scottish Gaelic / Serbian (Latin) / Shona / Slovak / Slovene / Sorbian / Spanish / Swahili / Swati / Swedish / Tagalog (Filipino) / Tahitian / Tokelauan / Tsonga / Turkish / Umbundu / Veps / Welsh / Wolof / Zulu

UNICODE RANGES

Complete: Basic Latin / Latin-1 Supplement / Latin Extended-A
Parts of: Mathematical Operators / Latin Extended-B / Latin Extended Additional / Spacing Modifier Letters / General Punctuation / Currency Symbols / Letterlike Symbols

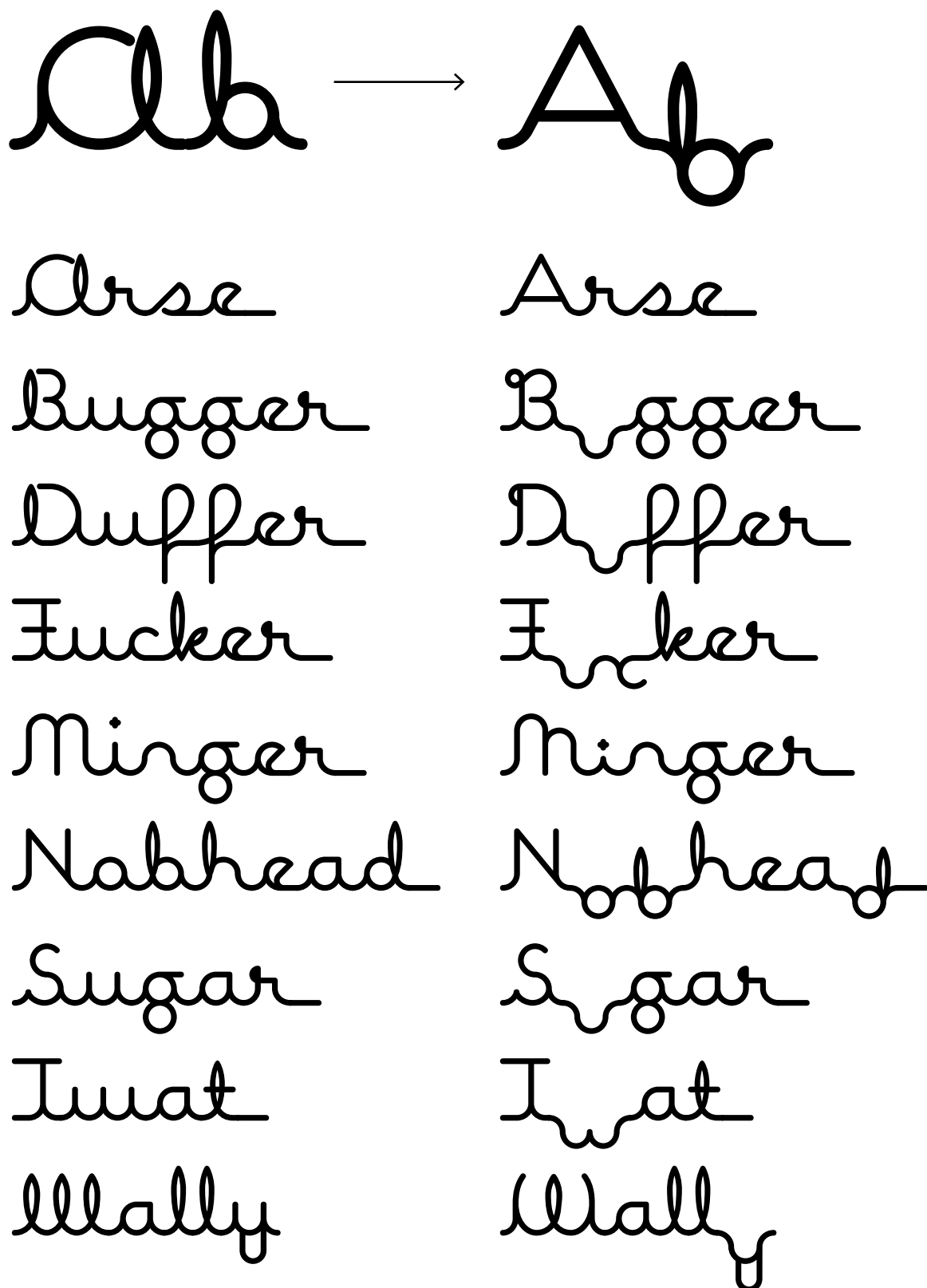
WEB FONT FEATURES

frac / liga / salt / sso1

CREDITS

Designed by Jonathan Barnbrook and Marcus Leis Allion
First published in 2001
Revised and expanded character set published in 2016

Expletive Script features a set of stylistic alternates. When using Adobe Illustrator, stylistic alternates are accessed via the OpenType panel by selecting **Stylistic Alternates**. When using Adobe InDesign, stylistic alternates are accessed via the character panel by selecting **OpenType > Stylistic Sets > Set 1**. When using CSS, stylistic alternates are activated using the **font-feature-settings** property with a value of either **salt** or **ss01**.



UPPERCASE

A B C D E F G H I J K L M N O P Q R S T U V W X Y Z

LOWERCASE

a b c d e f g h i j k l m n o p q r s t u v w x y z

ACCENTED UPPERCASE

À Á Â Ã Ä Å Æ Ç È É Ê Ë
Ì Í Î Ï Ñ Ò Ó Ô Õ Ö × Ø Ù Ú Û Ü
Ý Þ à á â ã ä å æ ç è é ê ë ì
í î ï ð ñ ò ó ô õ ö ø ù ú û ü ý ÿ ž

ACCENTED LOWERCASE

à á â ã ä å æ ç è é ê ë ì
í î ï ð ñ ò ó ô õ ö ø ù ú û ü ý ÿ ž

ALTERNATE UPPERCASE

A B C D E F G H I J K L M N O P Q R S T U V W X Y Z

ALTERNATE LOWERCASE

a b c d e f g h i j k l m n o p q r s t u v w x y z

PUNCTUATION

! " # \$ % & ' () * + , - . / : ;
< > [\] ^ _ ` { | } ~ ¡ ¢ £ ¤ ¥ ¦ § ¨ © ª « ¬ ® ¯ ° ± ² ³ ´ µ ¶ · ¸ ¹ º » ¼ ½ ¾ ¿

LIGATURES

fi fl ll ij

STANDARD FIGURES

0 1 2 3 4 5 6 7 8 9

SYMBOLS

® © ™ § ¨ °

FRACTIONS

¼ ½ ¾ 1 2 3

CURRENCY

\$ £ € ¥ ¢

ORDINALS

aa

MATHEMATICAL

+ - ± < > ≤ ≥ ≠ ~ ~ / # % ‰ ∞ Ω

UPPERCASE

A B C D E F G H I J K L M N O P Q R S T U V W X Y Z

LOWERCASE

a b c d e f g h i j k l m n o p q r s t u v w x y z

ACCENTED UPPERCASE

À Á Â Ã Ä Å Æ Ç È É Ê Ë
Ē Ĕ Ė Ę Ě Ć Ĉ Ċ Ğ Ĥ Ħ İ Ï Ĵ Ķ ĸ Ĺ Ļ Ľ Ŀ
Ń Ņ Ň Ŋ Ò Ó Ô Õ Ö Ñ Ò Ó Ô Õ Ö Ñ Ò Ó Ô Õ Ö Ñ
Ŧ Ũ Ū Ŭ Ÿ Ž ž Ž

ACCENTED LOWERCASE

à á â ã ä å æ ç è é ê ë ì í î ï ð
ñ ò ó ô õ ö ÷ ø ù ú û ü ý ÿ ž ž ž
ŧ Ũ Ū Ŭ Ÿ Ž ž Ž

ALTERNATE UPPERCASE

A B C D E F G H I J K L M N O P Q R S T U V W X Y Z

ALTERNATE LOWERCASE

a b c d e f g h i j k l m n o p q r s t u v w x y z

PUNCTUATION

! ! ? , ; ' ' " " . • « » < > * ' " / ({ [] }) \ _ - - - - @ & #

LIGATURES

fifl ij

STANDARD FIGURES

0 1 2 3 4 5 6 7 8 9

SYMBOLS

® © ™ § ¨ °

FRACTIONS

1/4 1/2 3/4 1 2 3

CURRENCY

\$ £ € ¥ ¢

ORDINALS

aa

MATHEMATICAL

- + < > ≤ ≥ = ≈ ~ ↗ / # % ‰ μ Ω

UPPERCASE

A B C D E F G H I J K L M N O P Q R S T U V W X Y Z

LOWERCASE

a b c d e f g h i j k l m n o p q r s t u v w x y z

ACCENTED UPPER CASE

À Á Â Ã Ä Å Æ Ç È É Ê Ë
Ì Í Î Ï Ñ Ò Ó Ô Õ Ö × Ø Ù Ú Û Ü Ý Þ
ß à á â ã ä å æ ç è é ê ë ì í î ï ð
ñ ò ó ô õ ö ø œ ÿ ž

ACCENTED LOWER CASE

à á â ã ä å æ ç è é ê ë ì í î ï ð
ñ ò ó ô õ ö ø œ ÿ ž

ALTERNATE UPPER CASE

A B C D E F G H I J K L M N O P Q R S T U V W X Y Z

ALTERNATE LOWER CASE

a b c d e f g h i j k l m n o p q r s t u v w x y z

PUNCTUATION

! " # \$ % & ' () * + , - . / : ; < > [\] ^ _ ` { | } ~ ¡ ¢ £ ¤ ¥ ¦ § ¨ © ª « ¬ ® ¯ ° ± ² ³ ´ µ ¶ · ¸ ¹ º » ¼ ½ ¾ ¿

LIGATURES

fi fl ll ij

STANDARD FIGURES

0 1 2 3 4 5 6 7 8 9

SYMBOLS

® © ™ § ¨ °

FRACTIONS

1/4 1/2 3/4 1 2 3

CURRENCY

\$ ¢ € ¥ ¤

ORDINALS

aa

MATHEMATICAL

+ - < > ≤ ≥ = ≈ ~ / # % & μ Ω

UPPERCASE

A B C D E F G H I J K L M N O P Q R S T U V W X Y Z

LOWERCASE

a b c d e f g h i j k l m n o p q r s t u v w x y z

ACCENTED UPPER CASE

À Á Â Ã Ä Å Æ Ç È É Ê Ë
Ì Í Î Ï Ñ Ò Ó Ô Õ Ö × Ø Ù Ú Û Ü Ý Þ
ß à á â ã ä å æ ç è é ê ë ì í î ï ð
ñ ò ó ô õ ö ø œ ù ú û ü ý þ ÿ ž

ACCENTED LOWER CASE

à á â ã ä å æ ç è é ê ë ì í î ï ð
ñ ò ó ô õ ö ø œ ù ú û ü ý þ ÿ ž

ALTERNATE UPPER CASE

A B C D E F G H I J K L M N O P Q R S T U V W X Y Z

ALTERNATE LOWER CASE

a b c d e f g h i j k l m n o p q r s t u v w x y z

PUNCTUATION

! " # \$ % & ' () * + , - . / : ; = > ? @ [\] ^ _ ` { | } ~

LIGATURES

fi fl ll ij

STANDARD FIGURES

1 2 3 4 5 6 7 8 9

SYMBOLS

® © ™ § ¨ °

FRACTIONS

1/4 1/2 3/4 1 2 3

CURRENCY

\$ £ € ¥ ¢

ORDINALS

aa

MATHEMATICAL

+ - < > ≤ ≥ = ≈ ~ / # % & μ Ω



THE CHARACTERS CAN GO

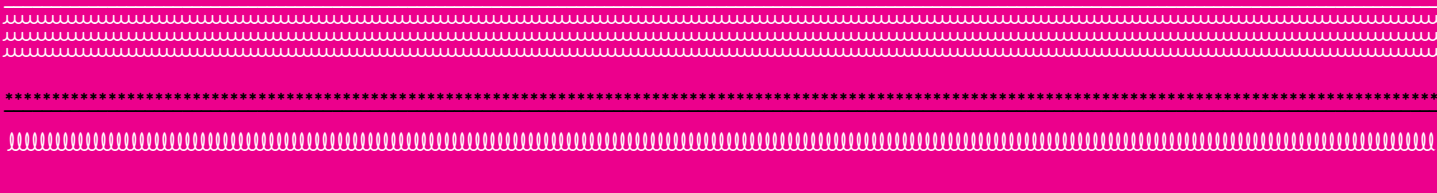
ABOVE AND BELOW THE

BASELINE TO CREATE

INTERESTING DISPLAY

TYPOGRAPHY AND COMPLEX

BACKGROUND PATTERNS



224 PT

* o / E t !

120 PT

Myellard

102 PT

Balderdash

60 PT

ah, Cabbledygaaak

224 PT

* o / & t !

120 PT

Myellard

102 PT

Balberdash

60 PT

ah, cabbledygaaak

224 PT

Et \$ @ * !

180 PT

Blimmy

102 PT

Geidy Art

72 PT

Ah Fiddle Sticks

48 PT

Blaamir Sainted Trousers!

Et \$ @ * !

Blimy

Geidy Art

Ah Fiddle Sticks

Blaamir Sainted Trousers!

